



BISON
COMPOSITE FENCING



The mark of responsible forestry

THE LOW MAINTENANCE FENCING SYSTEM THAT COMBINES STYLE AND DURABILITY



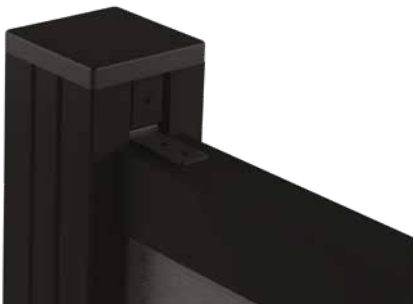
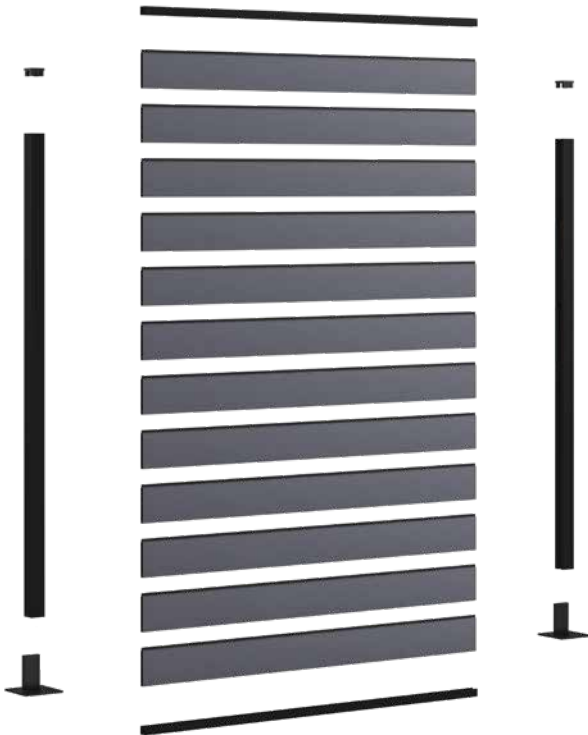
bisoncompositefencing.co.uk



BISON
COMPOSITE FENCING



Bison Composite Fencing combines strength, durability and style in an innovative yet easy to install system.



IT'S COST-EFFECTIVE

Unlike wooden fencing, Bison Composite Fencing won't deteriorate and need regular maintenance. Our composite fencing is fade resistant due to its strong uv resistance & won't rot or splinter, meaning no painting, staining and very little maintenance throughout its life expectancy, which will far exceed its industry leading 20 year manufacturer warranty.

IT'S HARDWEARING

The Bison fencing system uses powder coated aluminium posts that won't twist or warp like timber posts, making the system far stronger and able to withstand all elements better than traditional fencing. The structured WPC fencing planks are likewise extremely strong, being a composite material they don't absorb water and won't warp, neither will they provide conditions that promote fungal & mould growth which timber fencing does.

IT'S EASY TO INSTALL

Bison fencing is a well-designed system with minimal components to ensure an easy and fast installation. Once your fence posts are set, the rails and planks slot easily into place which makes it simple to install for both DIY enthusiasts & experienced trade professionals.

IT'S UNIQUE

Bison is unlike most other composite fencing systems in that it isn't restricted to straight or right-angled fence lines. Our unique angled post trims allow your fence to be set at either 135° or 157° to help follow the boundary of your property instead of squaring it off, making the most of your garden space. Bison Fencing planks can also be layered with a horizontal gap in between to afford a view of your surroundings without spoiling your privacy.

IT'S ENVIRONMENTALLY FRIENDLY

Bison composite fence planks are made from 95% recycled materials (a combination of recycled wood fibres and plastic) All posts and rails are made of aluminium.



The mark of responsible forestry

PRODUCTS

COMPLETE FENCE KIT

To achieve a 1.825 (6ft) run of fencing



Within the Fence Kit:

4 x Packs of Fence Planks
(12 planks total)

1 x Fence Post Kit

Note that an additional fence post kit is required to finish the end of fence run.

Options:

1900mm post with Coffee planks
BF1FENCEKIT1900-CO

2700mm post with Coffee planks
BF1FENCEKIT2700-CO

1900mm post with Cinder planks
BF1FENCEKIT1900-CI

2700mm post with Cinder planks
BF1FENCEKIT2700-CI

1900mm post with Stone planks
BF1FENCEKIT1900-ST

2700mm post with Stone planks
BF1FENCEKIT2700-ST

All aluminium posts and trims are supplied in graphite grey powder coated finish.

FENCING POST KIT

Graphite Grey Aluminium

1 x Long Fence Post



2 x Post Infill Section



1 x Plastic Post Cap



2 x L-Link Post Brackets with Screws



1 x Aluminium Top Rail



1 x Aluminium Bottom Support Rail



4 x Infill Packer Pieces with Screws



Images not to scale

Sizes:

2700mm high
BF1POSTKITN-2700

1900mm high
BF1POSTKITN-1900





BISON
COMPOSITE FENCING



ADDITIONAL COMPONENTS

Fencing Planks

Pack of 3 planks
1800mm long.
Colours available:
Coffee
BF1PLANK-CO
Cinder
BF1PLANK-CI
Stone
BF1PLANK-ST



Fence Post (Standalone)

Graphite Grey Fence
post in either 1.9m or
2.7m height.
1900mm BF1POST-1900
2700mm BF1POST-2700



Aluminium Post Infill (2)

To fill other sides of
the fence post to make
it tidy.
1900mm long.
BF1FILL



Aluminium Angled Post Infill Trim 135°

To create an angled
fence line.
135° Degree 1900mm
long trim to change the
angle of the fencing.
BF1ANGLE-135



Aluminium Angled Post Infill Trim 157°

To create an angled
fence line
157° Degree 1900mm
long trim to change the
angle of the fencing.
BF1ANGLE-157



Aluminium Top Rail

BF1TOPRAIL



Aluminium Bottom Support Rail

BF1BOTSUPRAIL



Plastic Post Cap

To finish the top of the post.
BF1CAP



Fence Post Base

To install the post on to concrete.
BF1BASE



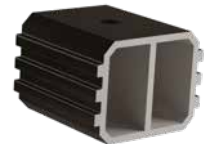
L-Link Post Bracket (2)

To secure horizontal rails.
BF1LINK



Post Infill Packer Piece (4)

To fill the groove on the inside
of the posts at the bottom and
top of the fencing.
BF1PACK



Bison Gate Unit

A robust aluminium framed door
with a lockable handle.
1750mm x 1000mm
Available in 3 colours.

Coffee
BF1GATE-CO
Cinder
BF1GATE-CI
Stone
BF1GATE-ST

